

Department 110 – Animal & Veterinary Science

CLASS A – Veterinary Science

- Open to youth enrolled in the 4-H Veterinary Science project or youth of other groups doing equivalent work.
- No more than 5 entries in Class A. 1 per lot.
- Face-to-face judging on Tuesday from Noon – 6 PM.

Premiums: \$1.75 - \$1.50 - \$1.25 - \$1.00

Lot numbers

1. Educational poster on parts/anatomy of an animal
2. Educational poster on 5 different breeds of an animal – include characteristics
3. Educational poster on the parasites of an animal
4. Educational poster on animal nutrition
5. Educational poster on proper care of an animal
6. Educational poster on a disease of an animal
7. Scrapbook – steps necessary for raising a healthy animal from birth to maturity – special emphasis on all procedures to prevent disease
8. Educational poster any other animal related topic
9. Educational poster on the life stages of your favorite animal
10. Educational poster on the tools of a veterinarian
11. Educational poster on 3 types of muscle tissue of an animal
12. Educational poster on a bone which has been split down the center
13. Poster on the heart and its chambers and show the direction of blood flow
14. Any other educational poster on a part of an animal's system
15. Educational poster on the life cycle of an external parasite – identify parasite
16. Educational poster on the life cycle of an internal parasite – identify parasite
17. Educational poster on the mastitis cycle in a cow's udder
18. Educational poster on animal stresses
19. Any other educational poster on animal disease
20. Educational poster on immunization of animals
21. Educational poster on animal reproduction
22. Educational poster on the importance of genetics in breeding
23. Educational poster on the animal cell structure and function
24. Educational exhibit which illustrates signs of various diseases/illnesses in a selected animal species and/or treatment for diseases/illnesses
25. Educational poster on animal diseases that can spread to humans
26. Exhibit on veterinary medical career(s)
27. Educational display on veterinary terminology
28. Any other educational exhibit related to veterinary science



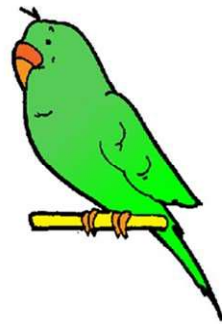
CLASS B – Pets

- Judged Danish on Sunday beginning at Noon in Building #4 – Small Animals.
- Caged birds are to be brought at 10:30 AM on Sunday. Caged bird judging begins at 11:30 AM.
- Caged birds that do not have their plumage may not be exhibited.
- All other pets are to be brought to Building #4 between 10:30 AM and 11:30 AM on Sunday.
- No more than 4 pets per exhibitor. 1 per lot.
- Supply your own cages. Be sure your cage is secure.
- Cavy exhibitors must put name of breed on entry tag.
- Ferrets must be vaccinated for rabies by a licensed veterinary at least 1 month prior to date of show.
- Proof of vaccination must be presented to the superintendent upon entry.
- Pets may leave when judging is finished. All pets must be claimed by 6 PM on Sunday.

Premiums: \$2.00 - \$1.75 - \$1.50 - \$1.25

Lot numbers

101. Parakeet – single
 102. Parakeet – one pair of birds
 103. Hooked bill – single (parrot, cockatiel, etc.)
 104. Hooked bill – one pair of birds (parrot, cockatiel, etc.)
 105. Hard bill – single (finches, canaries, weavers, quail, etc.)
 106. Hard bill – one pair of birds (finches, canaries, weavers, quail, etc.)
 107. Soft bill – single (mynas, jays, toucans, etc.)
 108. Soft bill – one pair of birds (mynas, jays, toucans, etc.)
 109. Any other caged bird not listed above – single
 110. Any other caged bird not listed above – one pair of birds
-
111. Cavies, junior boar – up to 4 months, no more than 22 oz. in weight
 112. Cavies, junior sow – up to 4 months, no more than 22 oz. in weight
 113. Cavies, intermediate boar – 4-6 months, 22-30 oz. in weight
 114. Cavies, intermediate sow – 4-6 months, 22-30 oz. in weight
 115. Cavies, senior boar – over 6 months, over 30 oz. in weight
 116. Cavies, senior sow – over 6 months, over 30 oz. in weight
-
117. Ferret – male
 118. Ferret – female
-
119. Gerbil – male
 120. Gerbil – female
-
121. Hamster – male
 122. Hamster – female
-
123. Reptile – snake, lizard, turtle, iguana, etc.
 124. Rodent – mouse, rat, etc.
 125. Pet rabbit (altered)
-
126. Any other pet not listed – type must be listed on entry tag



Pet Exhibitors are eligible to enter a **Pet Educational** exhibit.
See Department 110 - Class J

Animal and Vet Science Educational Exhibits

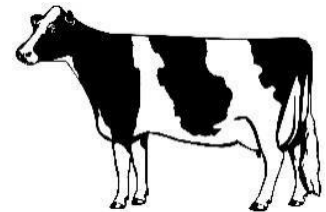
- Open to exhibitors enrolled in the 4-H Vet Science project or in the listed animal projects or youth of other groups doing equivalent work.
- Limited to 3 entries per class. 1 per lot.
- Face-to-face judging on Tuesday Noon – 6 PM.
- See poster rules.

Premiums: \$1.75 - \$1.50 - \$1.25 - \$1.00

CLASS C – Dairy Educational Exhibits

Lot numbers

201. Educational exhibit relating to dairy breeds
202. Educational poster relating to basic needs of dairy animals – food, water, housing, etc.
203. Educational poster relating to nutritional values of dairy products
204. Educational poster relating to comparative costs of dairy products
205. Educational poster relating to different uses of milk
206. Educational poster relating to promotion of dairy products
207. Educational poster relating to parts of the cow
208. Scrapbook – activities in dairy project (minimum 10 pages)
209. Educational poster relating to any other dairy related subject



CLASS D – Beef Educational Exhibits

Lot numbers

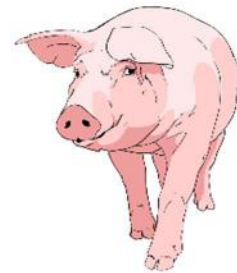
210. Educational poster relating to history of a breed
211. Educational poster relating to parts of a beef animal
212. Educational poster relating to disease or parasites of beef animals
213. Educational poster relating to nutritional values of beef products
214. Educational poster relating to keeping your animal healthy
215. Scrapbook – breeds with descriptions (minimum 10 pages)
216. Scrapbook – activities in beef project (minimum 10 pages)
217. Educational exhibit relating to any other beef related subject



CLASS E – Swine Educational Exhibits

Lot numbers

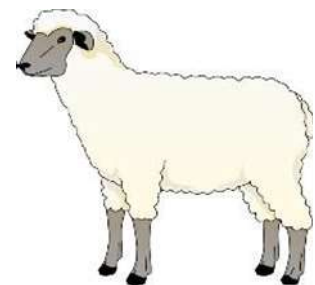
218. Educational poster relating to history of a breed
219. Educational poster relating to parts of a pig
220. Educational poster relating to disease or parasites of swine
221. Educational poster relating to nutritional values of pork products
222. Educational poster relating to keeping your animal healthy
223. Scrapbook – breeds with descriptions (minimum 10 pages)
224. Scrapbook – activities in swine project (minimum 10 pages)
225. Educational exhibit relating to any other swine related subject



CLASS F – Sheep Educational Exhibits

Lot numbers

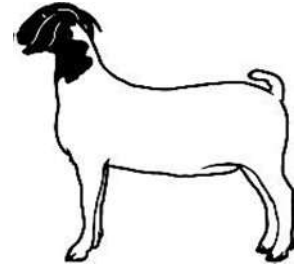
226. Educational poster relating to history of a breed
227. Educational poster relating to parts of a sheep
228. Educational poster relating to disease or parasites of sheep
229. Educational poster relating to nutritional values of lamb products
230. Educational poster relating to keeping your animal healthy
231. Scrapbook – breeds with descriptions (minimum 10 pages)
232. Scrapbook – activities in sheep project (minimum 10 pages)
233. Educational exhibit relating to any other sheep related subject



CLASS G – Goat Educational Exhibits

Lot numbers

- 234. Educational poster relating to history of a breed
- 235. Educational poster relating to parts of a goat
- 236. Educational poster relating to disease or parasites of goats
- 237. Educational poster relating to nutritional values of goat products
- 238. Educational poster relating to keeping your animal healthy
- 239. Scrapbook – breeds with descriptions (minimum 10 pages)
- 240. Scrapbook – activities in goat project (minimum 10 pages)
- 241. Educational exhibit relating to any other goat related subject



CLASS H – Horseless Horse and Horse & Pony Educational Exhibits

Lot numbers

- 242. Educational poster on a horse related topic
- 243. Any other educational display on a horse related topic



CLASS I – Dog Educational Exhibits

Lot numbers

- 244. Educational poster on a dog related topic
- 245. Scrapbook on a dog related topic
- 246. Educational display on a dog related topic



CLASS J – Pets Educational Exhibits

Lot numbers

- 247. Educational poster on a pet related topic
- 248. Scrapbook on a pet related topic
- 249. Educational display on a pet related topic



CLASS K – Cat Educational Exhibits

Lot numbers

- 250. Educational poster on a cat related topic
- 251. Scrapbook on a cat related topic
- 252. Educational display on a cat related topic

